

NEW CATALOGUE



www.fukuokaheavy.net

FUKUOKA

FV12D-I



FUKUOKA HEAVY INDUSTRIAL IN'T., LTD

Add: 195 Pearl's Hill Terrace, 02-58G, Singapore.

Tel: +65 62254336 - Fax: +65 62254971

Email: Onomatshita@gmail.com

FUKUOKA

Simple Drum Vibratory Rollers.
Japan standard,
Japan Engine,
Japan equipments.

For:

- * Airport & Highway construction and maintenance.
- * Parking lots & Sea ports Compaction.
- * Compaction your need.

Advanced:

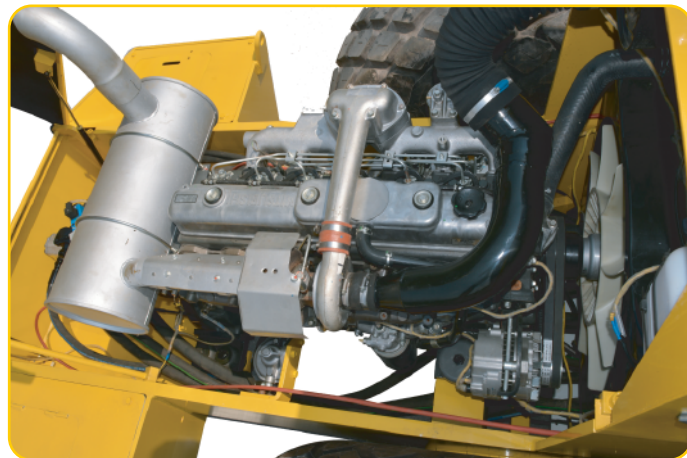
- * Engine is Mitsubishi made in Japan – 6 cylinder
- * Hydraulic System: supports by Sauer-Danfoss the first world-class provider of mobile hydraulics for the construction.
- * Japan Standard for all systems – Design by Fukuoka Institute of Technology (FIT).
- * Long-life Vibration System: Automatically lubricated by an oil bath even while the roller open Vibration.
- * Long time working for Required Service.
- * Very simply in service – All open and clear.



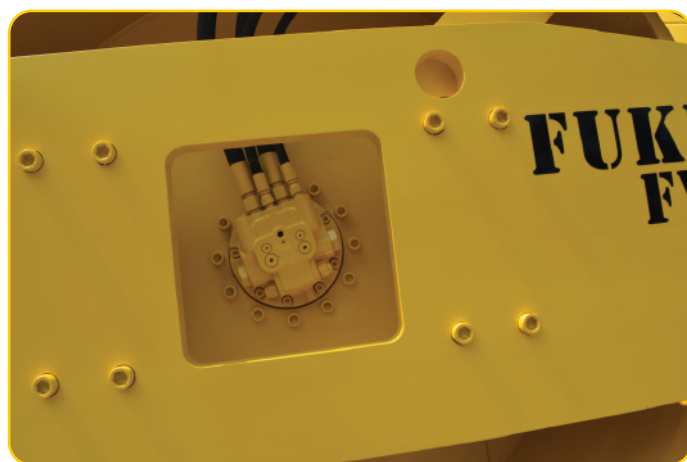
FV12D-I



Simple for Operator

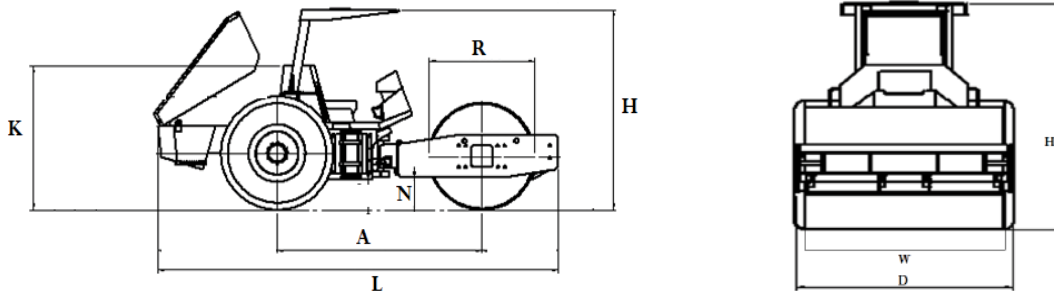


Engine Mitsubishi Made in Japan



Hydraulic Pumps – Sauer Danfoss Daikin

NEW CATALOGUE



Vibratory Soil Compactor			
FUKUOKA FV12D-I			
Weight	Weight	kg	11,500.00
	On Front Drum	kg	6,150.00
	On Rear Drum	kg	5,350.00
Power & Force	Static linear load (Drum)	kg/cm	30.75
	Centrifugal Force (Low)	Kgf	21,600.00
	Centrifugal Force (Hight)	Kgf	27,500.00
	Vibration Frequency (Low/Hight)	Hz	38/29
	Amplitude	mm	0.98 / 1.95
	Maximum Speed	Km/h	10.50
	Gradeability	(%)	44.50
	Outside Turning Radius	mm	5,625.00
Dimensional	Overall Length (L)	mm	5,850.00
	Overall Width (D)	mm	2,300.00
	Overall Height (H)	mm	2,950.00
	Wheelbase (A)	mm	2,950.00
	Drum Width (W)	mm	2,100.00
	Drum Diameter (R)	mm	1,540.00
	Height not with Canopy (K)	mm	2,120.00
	Curb Clearance (N)	mm	440.00
Engine	Make	Mitsubishi	
	Model	6D34 - TE1	
	Type	4 Cycles, 6 Cylinders in line, water-cooled, Direct Injection	
	Total Displasement	Liter	5.86
	Rated Output at 2,050 (rpm)	Kw	107.0
	Maximum Torque (at 1,600 rpm)	N.m	520.0
	Starter & Electric	V	24.0
Power Line	Transmission	Hydrostatic Transmission	
	Moving hydraulic : Sauer Danfoss	Closed system Pump	
	Drive	All Drive	
	Tire Size	23.1-26/8PR	
	Tire Pressure	Kgf/cm2	2.50
	Brake system :	Hydrostatic automatically	
Steering System	Steering	Full Hydraulic	
	Type :	Obit with 2 cylinders	
Vibrating Sys	Full Axial Piston Pumps : Sauer Danfoss	Electric shaft type	
	Vibration Step	Low & Hight	
	Control	Electric mount on Pump	
Fluid Capacity	Fuel	L	220.00
	Hydraulic	L	68.00

Note: Tolerance of Dimension + - (1%), Tolerance of Weight + - (3%)

NEW CATALOGUE

